

SYN-MTCHDIMS



Key Features

- Input Voltage (Min/Max): 12V–24V
- Colour Control Type: Single colour
- Max Output Current Per Channel: 0.05A
- Dimming Range (Min/Max): 5%–100%
- Mounting Type: Recessed
- Ingress Protection (IP): 20
- Warranty: 3 Years

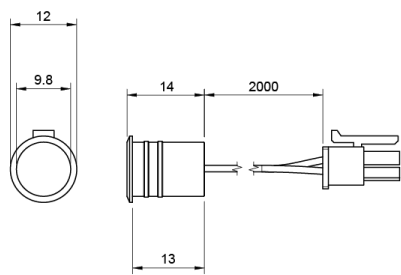
12V-24V

IP20

Mechanical Data

Body Colour	Silver
Cut Out Diameter	10 mm
Product Weight	25 g
Product Dimensions	15x12x10 mm

Dimensions



Input

Input Current Max ·	0.05 A
Input Current Type	DC
Input Voltage	12 -24 V
Input Current	0.05 A

Output

No · of Control Channels	1
Output Current Type	DC
Output Current Max · @12V	0.05 A
Output Current Max · @24V	0.05 A
Output Voltage	12 - 24 V
Output Current	0.05 A

## Control

Colour Control Type	Single colour
Control Input Resolution	16 Bit
Control Signal Input	PWM
Default PWM Frequency	250 Hz
Dimming Curve	Linear %
Dimming Greyscale	800
IC Type	DNF8
Interface Type	uart
No. of Programmes	1
Manual Override	Yes
Sensor Type	Touch Sensor
Dimming Range	5 - 100 %
LED Switching Load	60 W

## Electrical Data

Constant Voltage / Constant Current	CV
-------------------------------------	----

## Protection

Electrical Safety Class	II
Reverse Polarity Protection	Yes

## Environment

Application Environment	Interior
Body Material	Metal
Interior or Exterior Use	Interior
Mounting Type	Recessed

0161 507 9249 | [support@ultraleds.co.uk](mailto:support@ultraleds.co.uk) | [www.ultraleds.co.uk](http://www.ultraleds.co.uk) | Manchester, M17 1SJ Date: 08/07/2025

Ultra LEDs have taken reasonable care to ensure that the information in this datasheet is accurate at time of publication however it should be noted that all specifications are subject to tolerance. Descriptive specifications such as colour are subjective. Ultra LEDs reserve the right to update specifications without notice. The information in the datasheet may only be relied on by customers of Ultra LEDs in accordance with applicable terms and conditions

Ingress Protection (IP)	IP20
-------------------------	------

**Efficiency**

No-Load Power Consumption	0.2 W
Rated Life	500000 Hours
Standby Power Max ·	0.001 W
Standby Power Typ ·	0.0003
Startup Time	1 Secs

**Packaging & Shipping**

Fixings Included	Yes
------------------	-----